

THE RULE OF TWO

The goal of the Rule of Two is to ensure all interactions and communications are open, observable and justifiable

Its purpose is to protect all participants and volunteers, U18s and adults, in potentially vulnerable situations by ensuring more than one adult is present

The exception to the rule is in emergency situations.



Examples of Rule of Two good practice

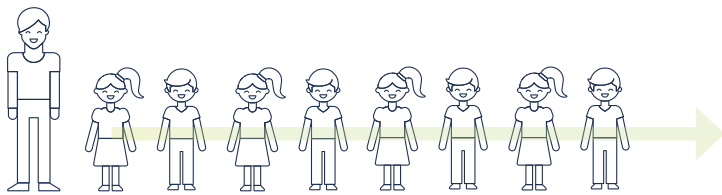
- Comply with ECB guidance on supervision /coach ratios
- Adults are never alone or out of sight with a participant without another DBS checked coach or adult volunteer present
- Allow coaching and playing environments to be open to observation
- Where an U18 is scoring with an adult, the scoring area has been appropriately risk assessed, the area is open with scoring activity visible and the rule of two is applied

ECB COACHING RATIOS

The below ratios should be followed alongside complying with the rule of two

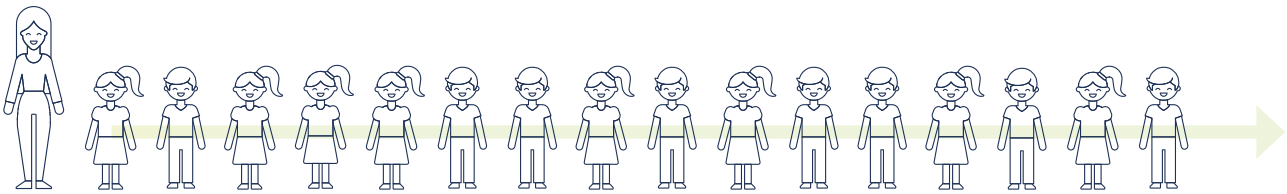
NET COACHING

1 coach: 8 children



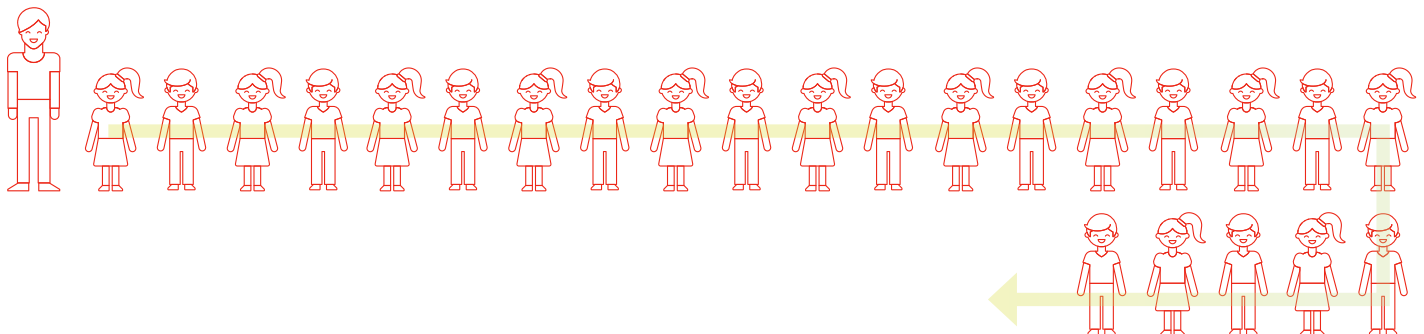
GROUP COACHING - HARD BALL

1 coach: 16 children



GROUP COACHING - SOFT BALL

1 coach: 24 children

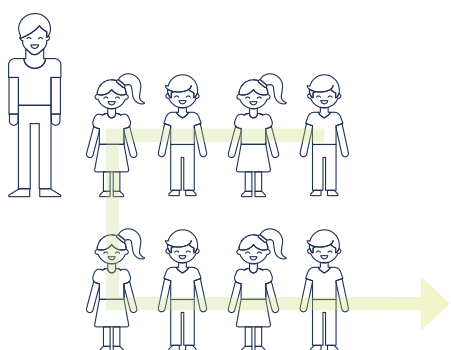


COACHING AND SUPERVISION RATIOS EXAMPLES

SUPERVISION

AGED 8 AND UNDER:

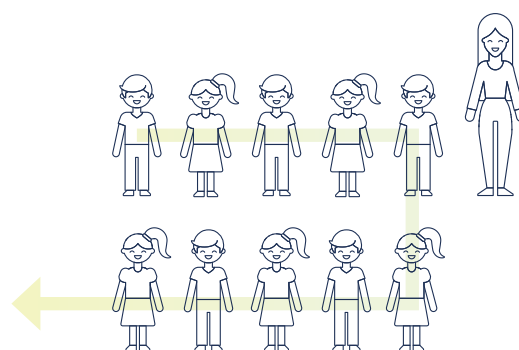
1 Adult to 8 children:



SUPERVISION

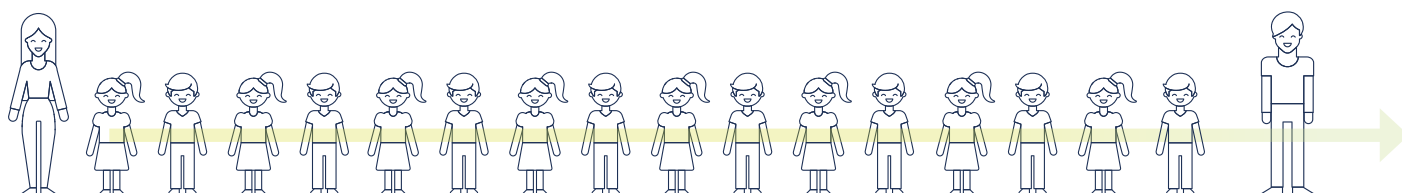
AGED 9 AND UNDER:

1 Adult to 10 children:



GROUP COACHING HARD BALL (U15'S)

1 coach, 16 children and then 1 volunteer helper



GROUP COACHING SOFT BALL - (U8'S)

1 coach: 24 children - 2 volunteer helpers

